



YANG-PUSH

Beryllium Release

March 15, 2016

Ambika Prasad Tripathy; ambtripa@cisco.com

Alexander Clemm, alex@cisco.com

Eric Voit, evoit@cisco.com



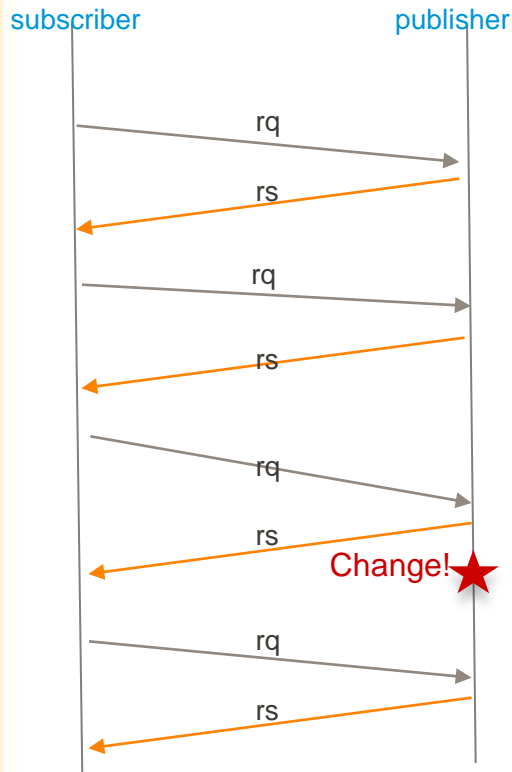
YANG-PUSH overview

- Allow clients to subscribe to automatic updates of YANG data
 - Which data – subtrees and data items of interest
 - Update policy – periodic, on-change
 - Consumption model: encoding, transport
- Streaming of updates – no need to poll
 - Any encoding, any transport
 - Netconf notifications, gRPC, ...
- Reliable and robust
 - Clients will know when subscriptions are suspended
- IETF Netconf WG draft:
<https://datatracker.ietf.org/doc/draft-ietf-netconf-yang-push/>

YANG Object Retrieval Patterns

On Demand

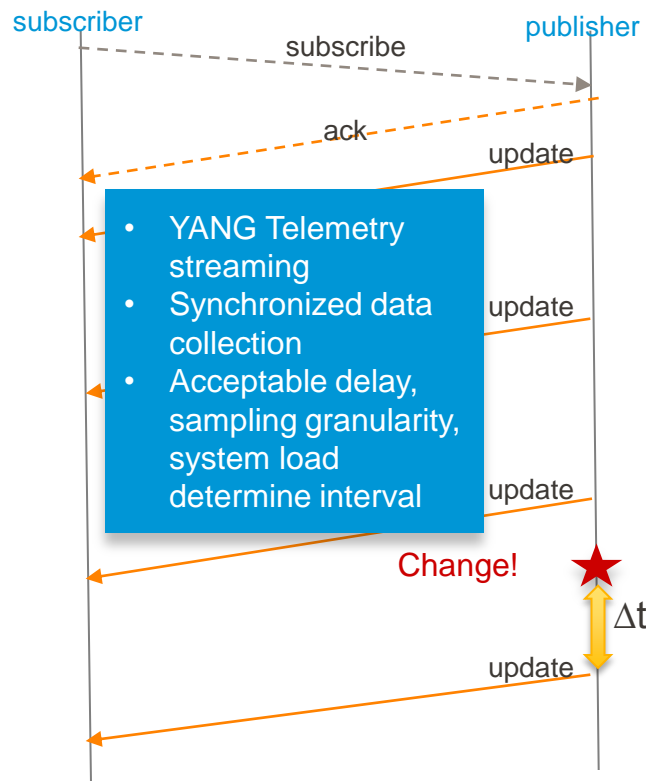
traditional – no YANG-Push:
ask for object every time



YANG-Push

Periodic

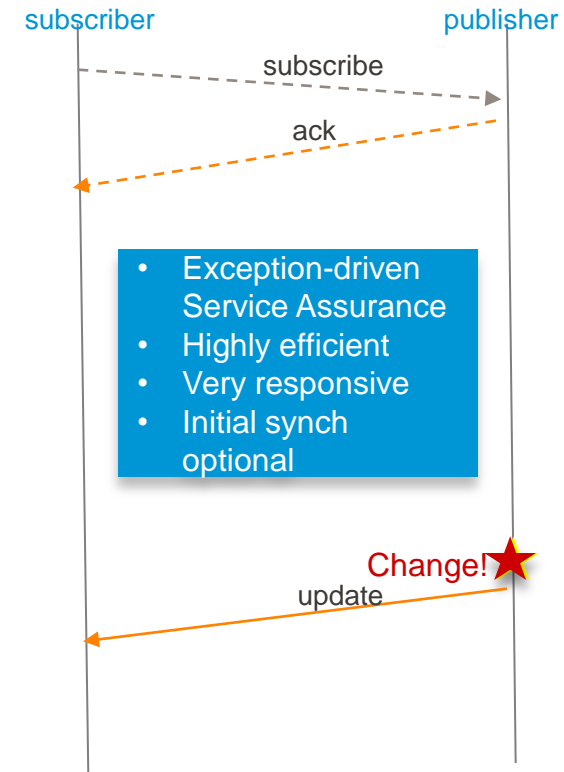
push every x ms



YANG-Push

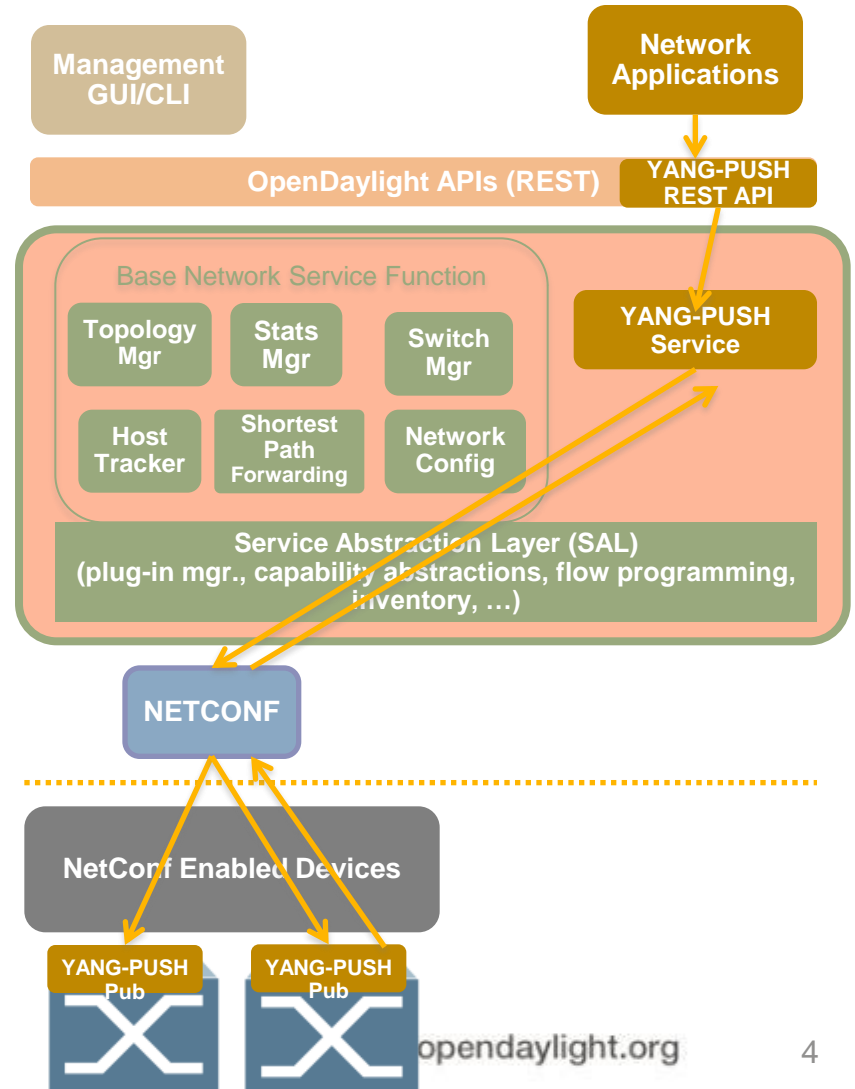
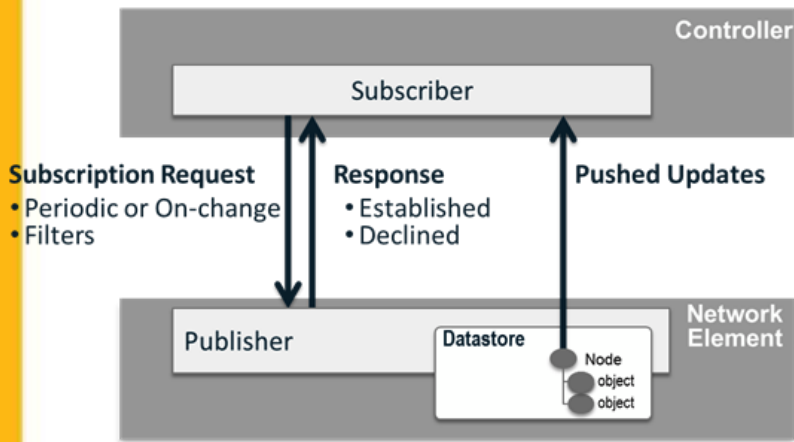
On Change

push when updates occur



YANG-PUSH Beryllium Release

- Simple YANG-PUSH Client
- Netconf as a transport
- create-subscription RPC
- Compliant with **ietf-datastore-push** model



YANG-Push Beryllium Release

- https://wiki.opendaylight.org/view/YANG_PUBSUB:Main
- Demo
 - Interact with ODL through RESTCONF
 - POST create-subscription RPC
 - GET subscription updates
(Beryllium is a push client, not a push server)
 - Virtual NE pushes updates to Beryllium using Netconf notifications
- Future
 - Push server support in addition to push client
 - Modify-subscription, delete-subscription RPC
 - Configured subscriptions
 - Support of other transports e.g. restconf, tcp/udp
- Contact: yang-push-dev@lists.opendaylight.org

Thank you!